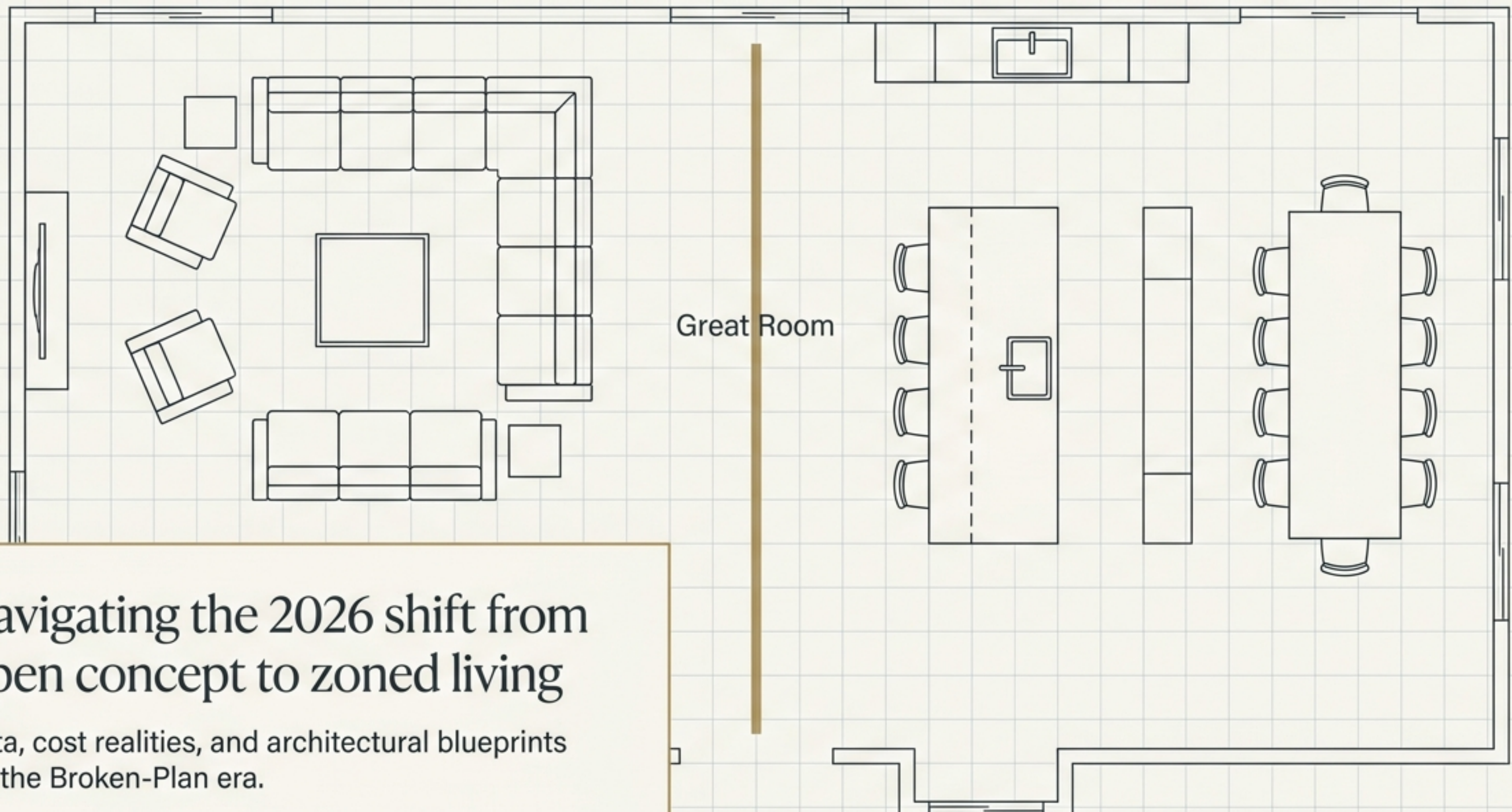


Navigating the 2026 shift from open concept to zoned living

Data, cost realities, and architectural blueprints for the Broken-Plan era.

Great Room



The floor plan illustrates a large rectangular room divided into two distinct zones by a vertical brown line. The left zone is a living area with a U-shaped sofa, a coffee table, and two armchairs. The right zone is a dining area with a large rectangular table, a smaller table, and several chairs. A kitchen area is visible at the top right, and a doorway is at the bottom center.

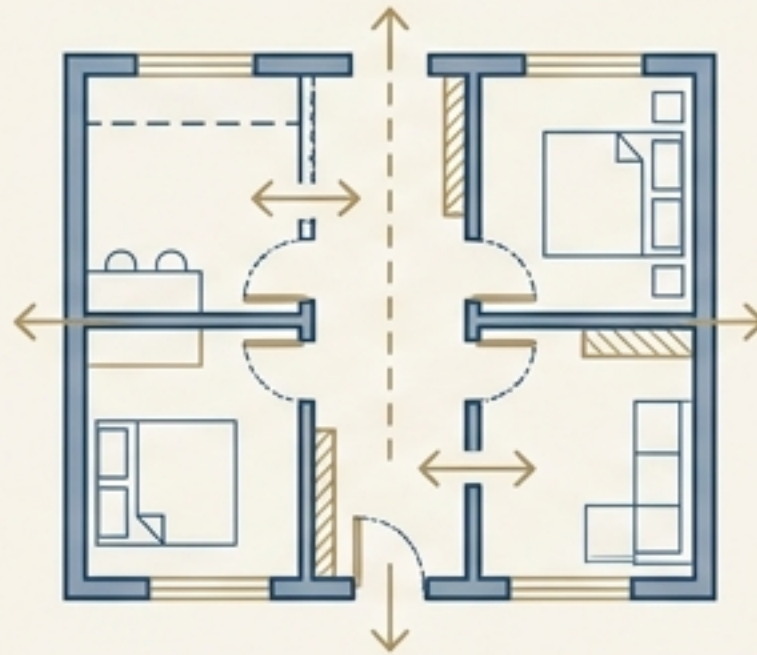
The era of the cavernous great room is ending

The Shift



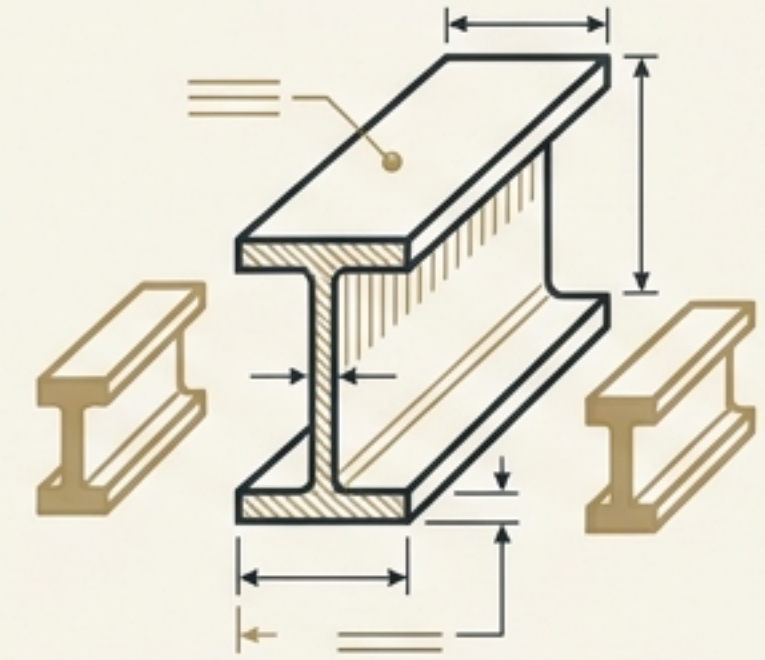
Only 34% of buyers now demand a completely open kitchen-family room layout, marking a sharp drop from its peak (National Association of Home Builders data).

The Solution



The Broken-Plan is emerging as the 2026 standard, merging the light and flow of open concepts with the privacy of defined rooms.

The Execution



Strategic zoning and partial separations consistently outperform expensive sledgehammer demolitions in both function and ROI.

Permanent economic and cultural shifts are redefining the American home

The Home as a Place of Production.



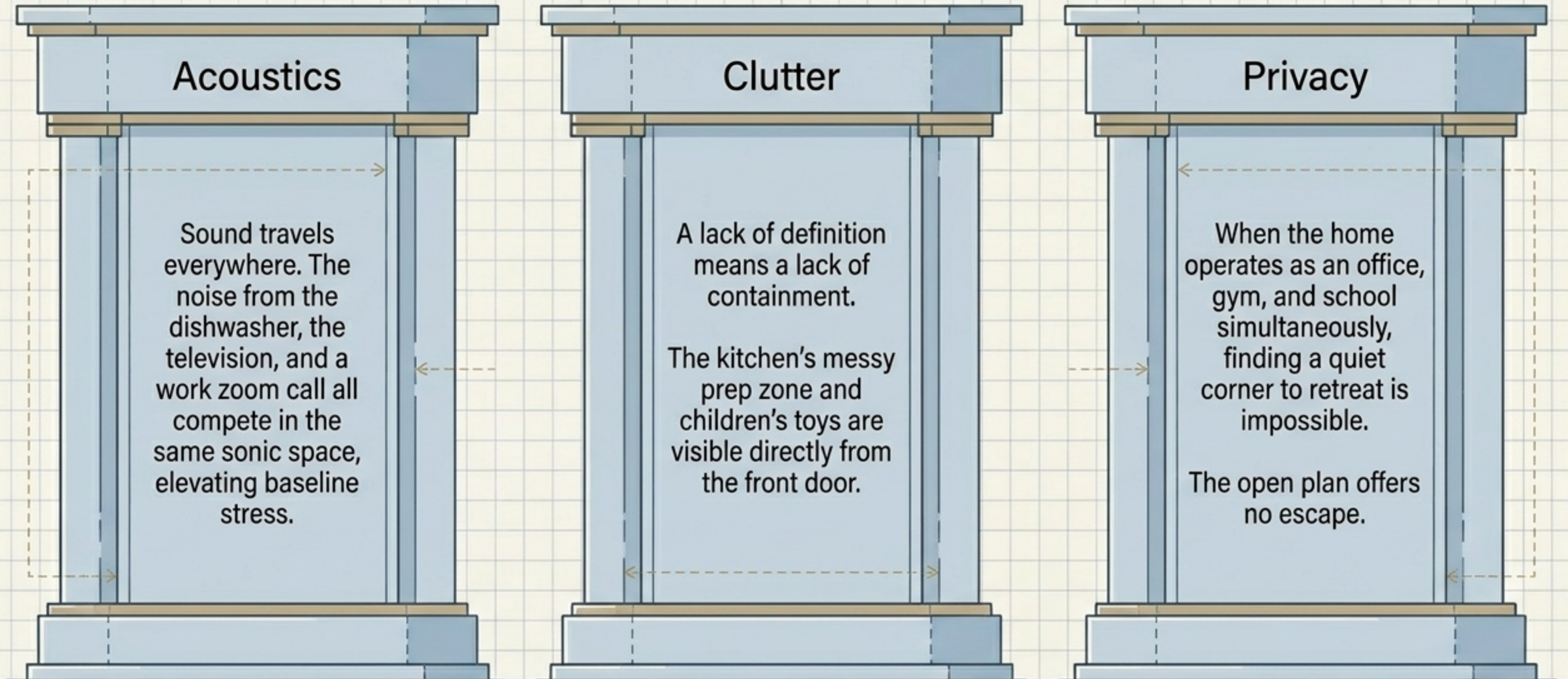
Permanent hybrid and remote work demand a new level of functionality. The home is no longer just a place of rest; it requires acoustic and visual privacy for focused work.

High Interest Rate Retention.

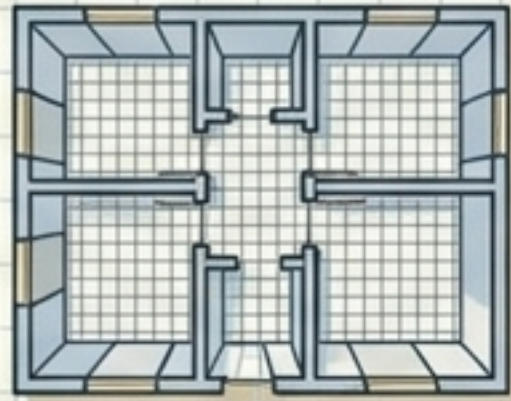


With fewer homeowners moving due to locked-in interest rates, the focus has shifted entirely to renovating existing footprints to work harder, rather than purchasing larger square footage.

The purely open concept fails modern families on three practical fronts

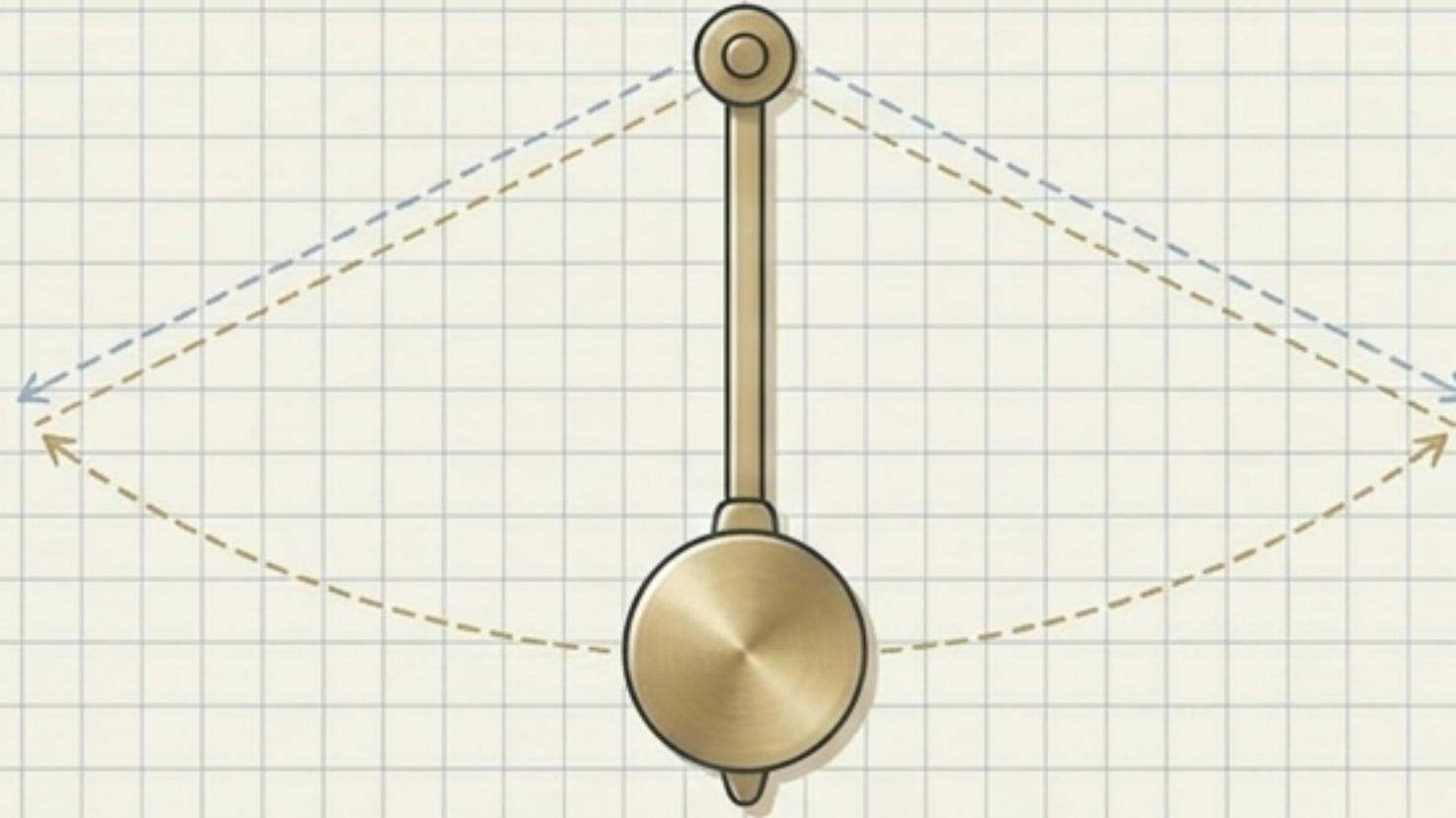


The design pendulum settles on intentional function over binary extremes



1970s

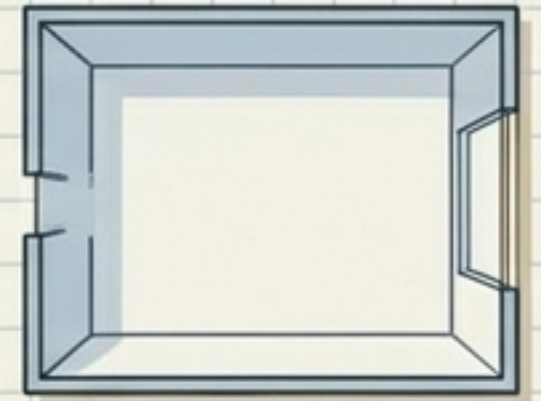
Compartmentalized.
Dark, cramped, and fully isolated rooms.



2026

Broken-Plan.

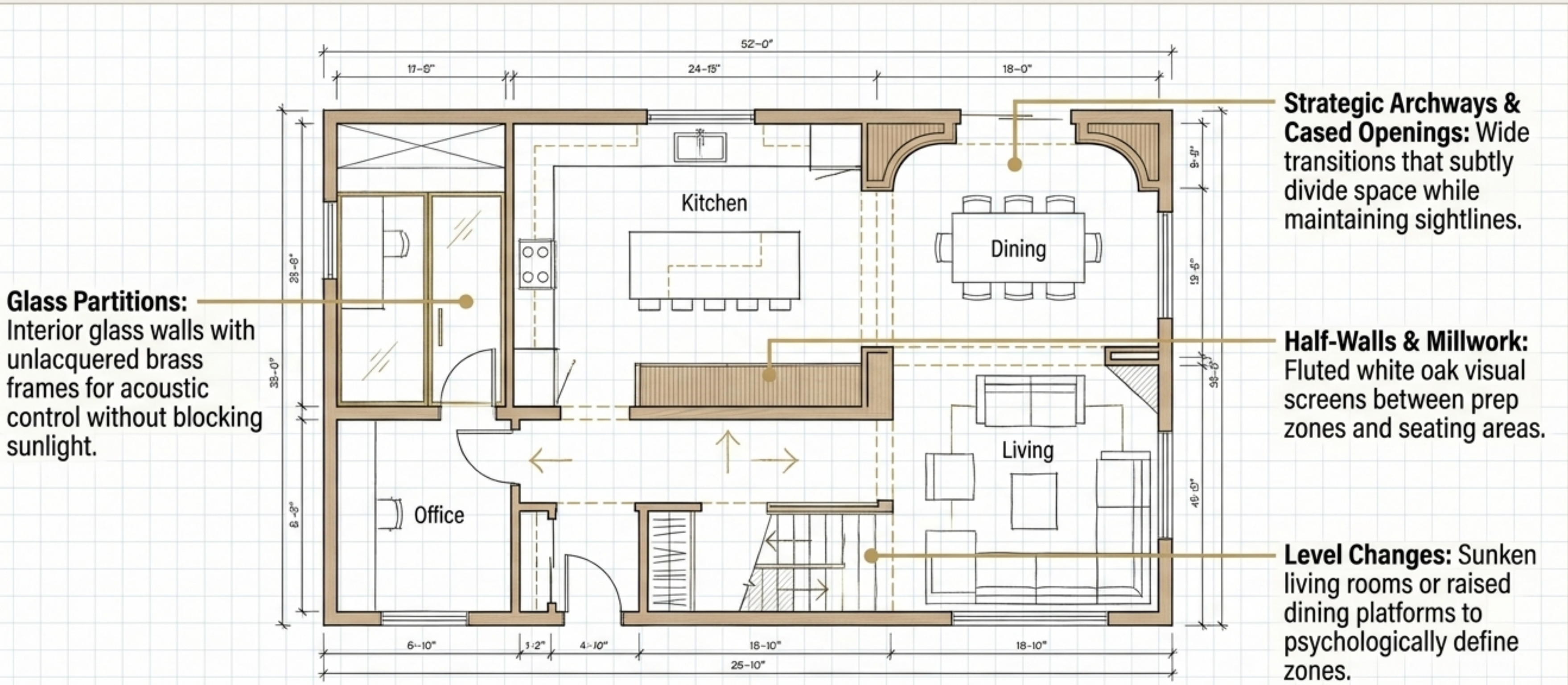
The pushback against the great room isn't about isolation; it's about function. The modern standard demands light and connection paired with clever separation.



2010s
















Fully Open.
The cavernous white box. Loud, messy, and lacks intimacy.

The broken-plan introduces strategic boundaries without sacrificing light



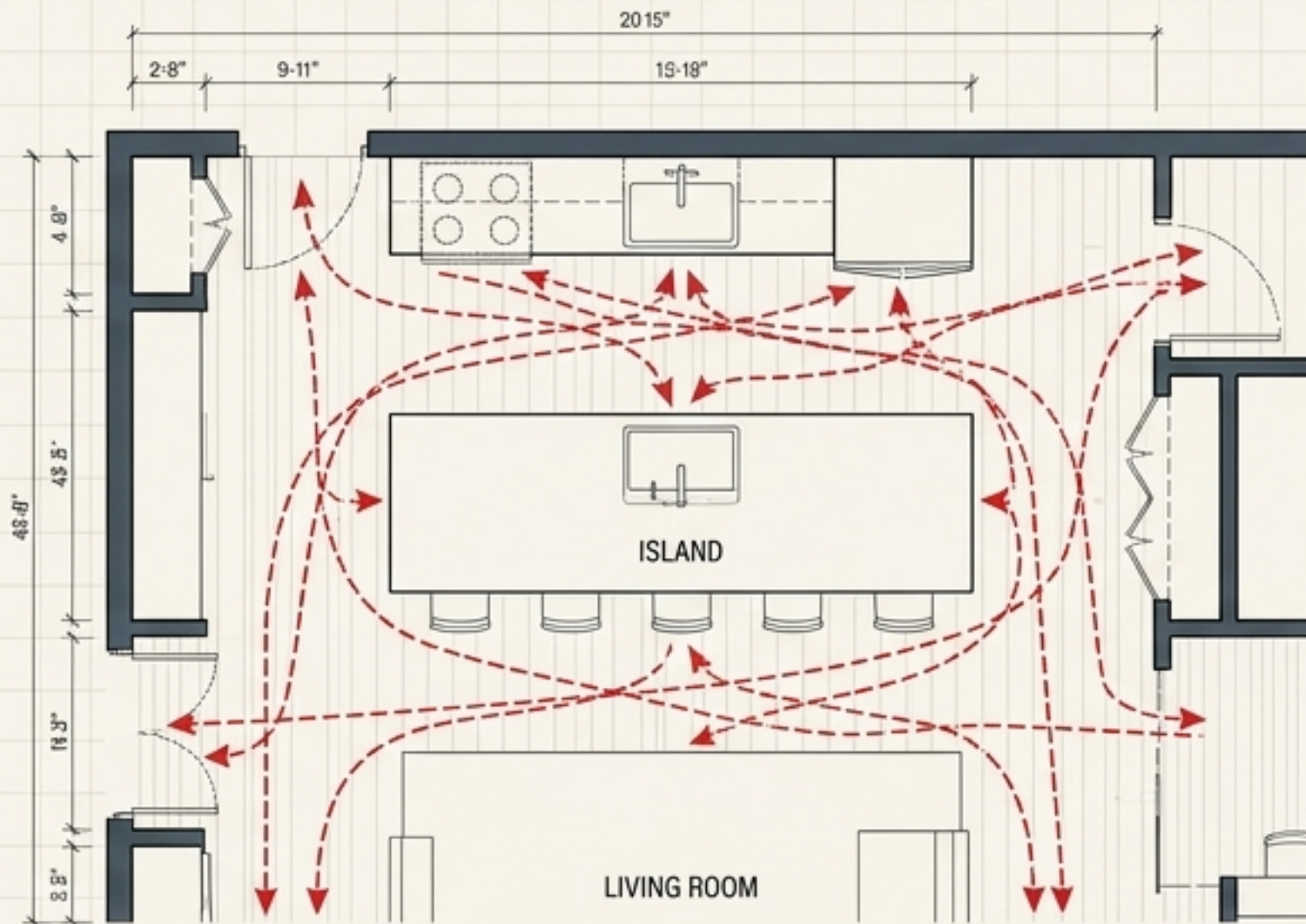
Broken-Plan (n): A layout maintaining the flow of open concept while introducing physical or visual barriers to create distinct functional zones.

Zoned living outperforms pure open concepts across all major residential metrics

Spatial Paradigm Matrix	Pure Open	Traditional Closed	Broken-Plan
Natural Light Flow			
Acoustic Control			
Clutter Containment			
Family Connection			
Privacy & Focus			

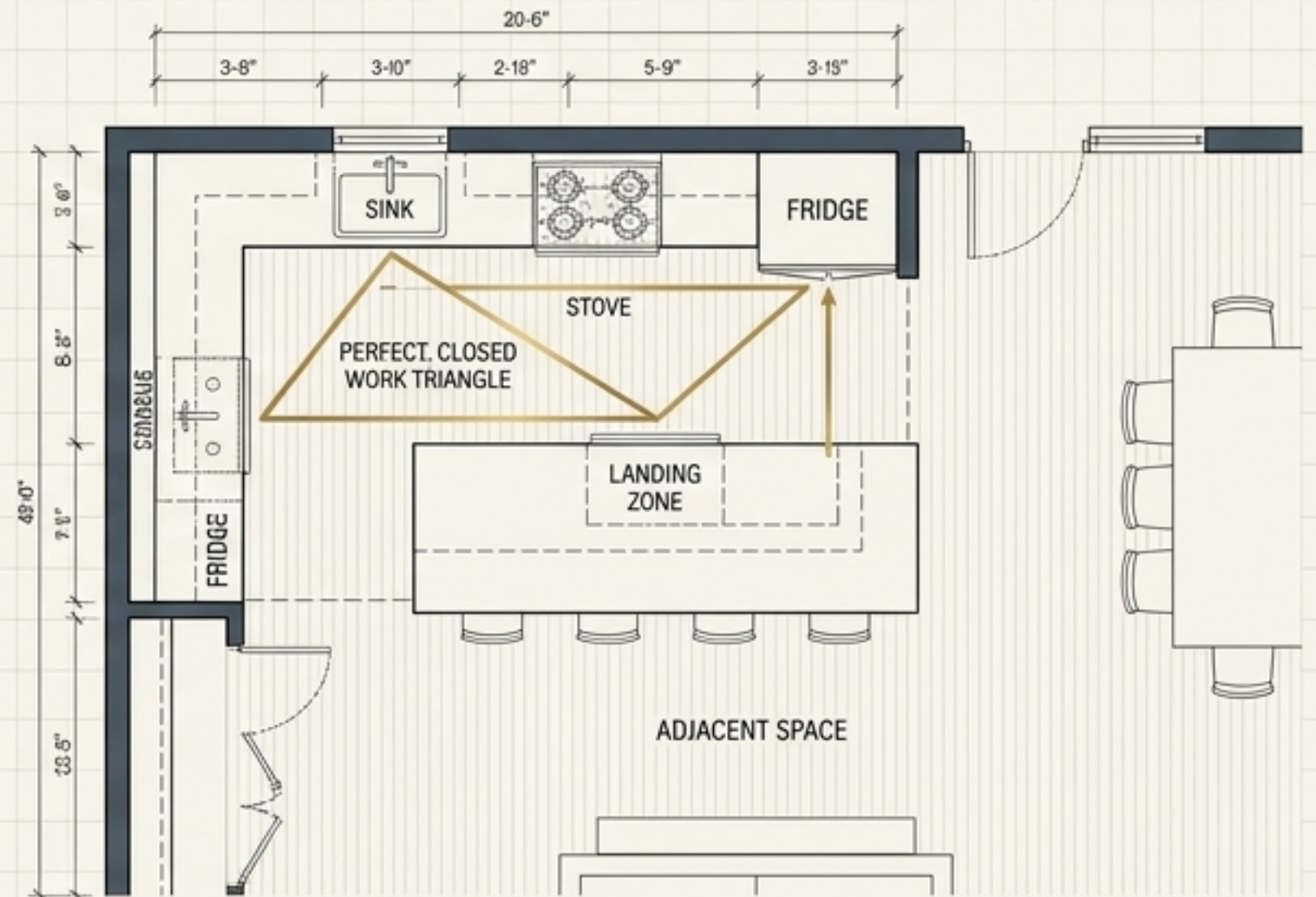
Unlacquered Brass Circle: Excellent; Half-filled: Moderate; Empty: Poor.

Kitchen design returns to defined boundaries and high-performance work zones



The Floating Island

Undefined workflow, spills into the living room, zero clutter containment.



The Defined Zone

Return of the galley and U-shape. Peninsulas provide a clear boundary and extra counter space without full wall separation.

The 2026 kitchen places massive emphasis on the classic work triangle and dedicated landing zones. Material trends favor rift-cut white oak and honed quartzite to give these defined spaces a warm, bespoke feel.

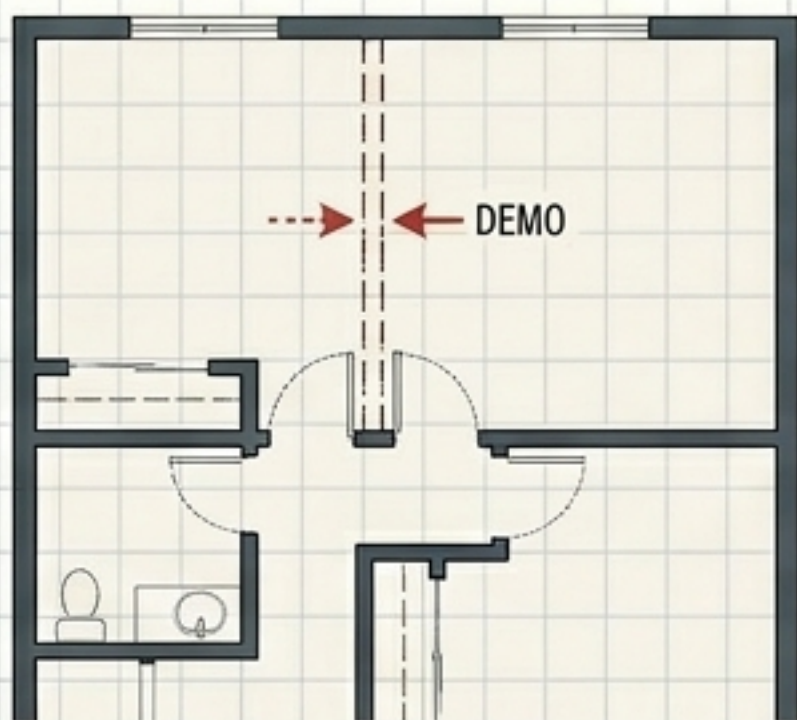
Structural wall modifications span a massive spectrum of cost and complexity

Wall-to-Wall Cost Spectrum

Remove Non-Load-Bearing Wall

\$800 - \$2,500

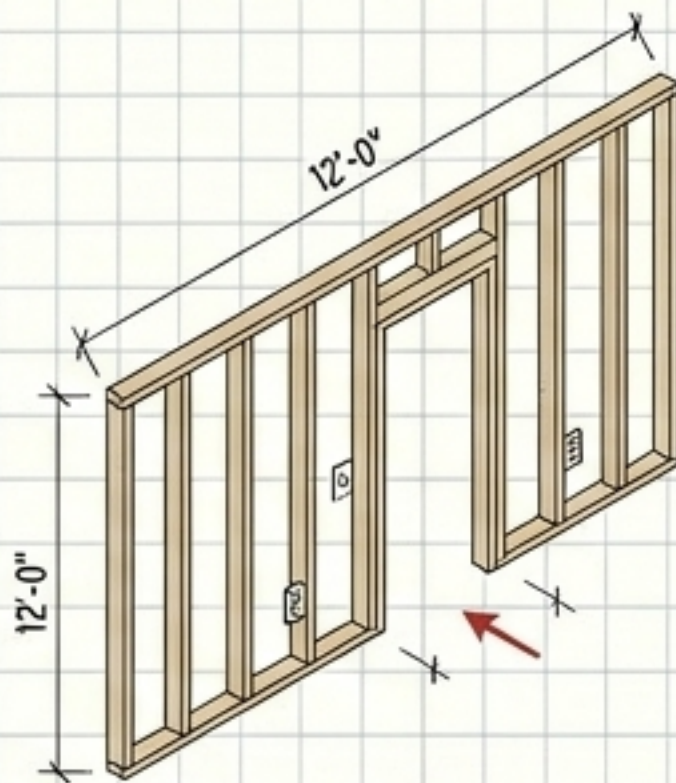
Covers demo, patching ceiling drywall, and floor patching.



Add New Interior Wall

\$2,500 - \$6,000

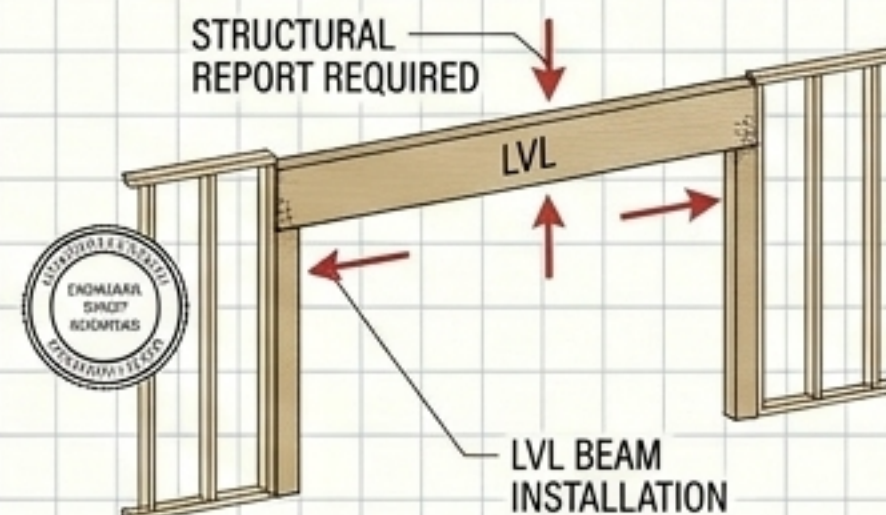
Covers framing a standard 12-foot wall with a doorway, electrical outlets, drywall, and paint.



Remove Load-Bearing Wall

\$4,000 - \$15,000+

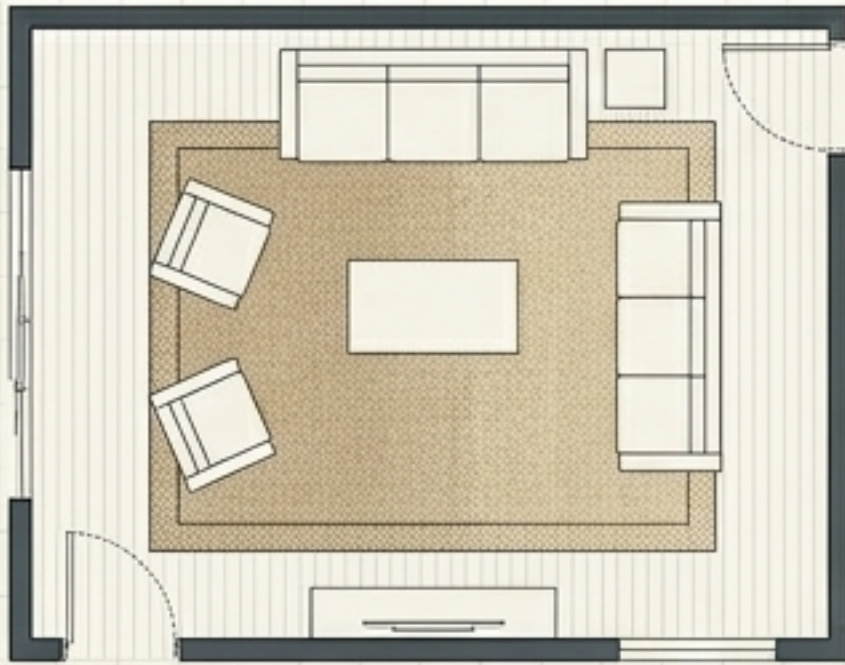
Requires a structural engineer's report, extensive finish work, and installation of a substantial laminated veneer lumber (LVL) beam.



Budget Realities.

The BLS reports skilled labor rates vary up to 40% by metro area. The NAHB recommends a 10-15% contingency for surprises behind drywall in homes older than 30 years.

Strategic non-structural interventions can redefine a floor plan without demolition



Large Area Rugs.

The classic strategy to anchor a specific seating area and visually separate it from adjoining transit space.



Open-Backed Bookshelves.

Creates a vertical visual separation between a living space and dining area without blocking natural light paths.



Strategic Sofa Placement.

Floating a sofa with its back to an adjacent zone creates an artificial 'hallway' that directs foot traffic flow.



Paint & Color Blocking.

Applying a complementary color to an alcove or nook signals a psychological transition to a new functional zone (e.g., a reading corner).

The reality-check funnel scopes renovations to actual daily behavior

Behavioral Phase

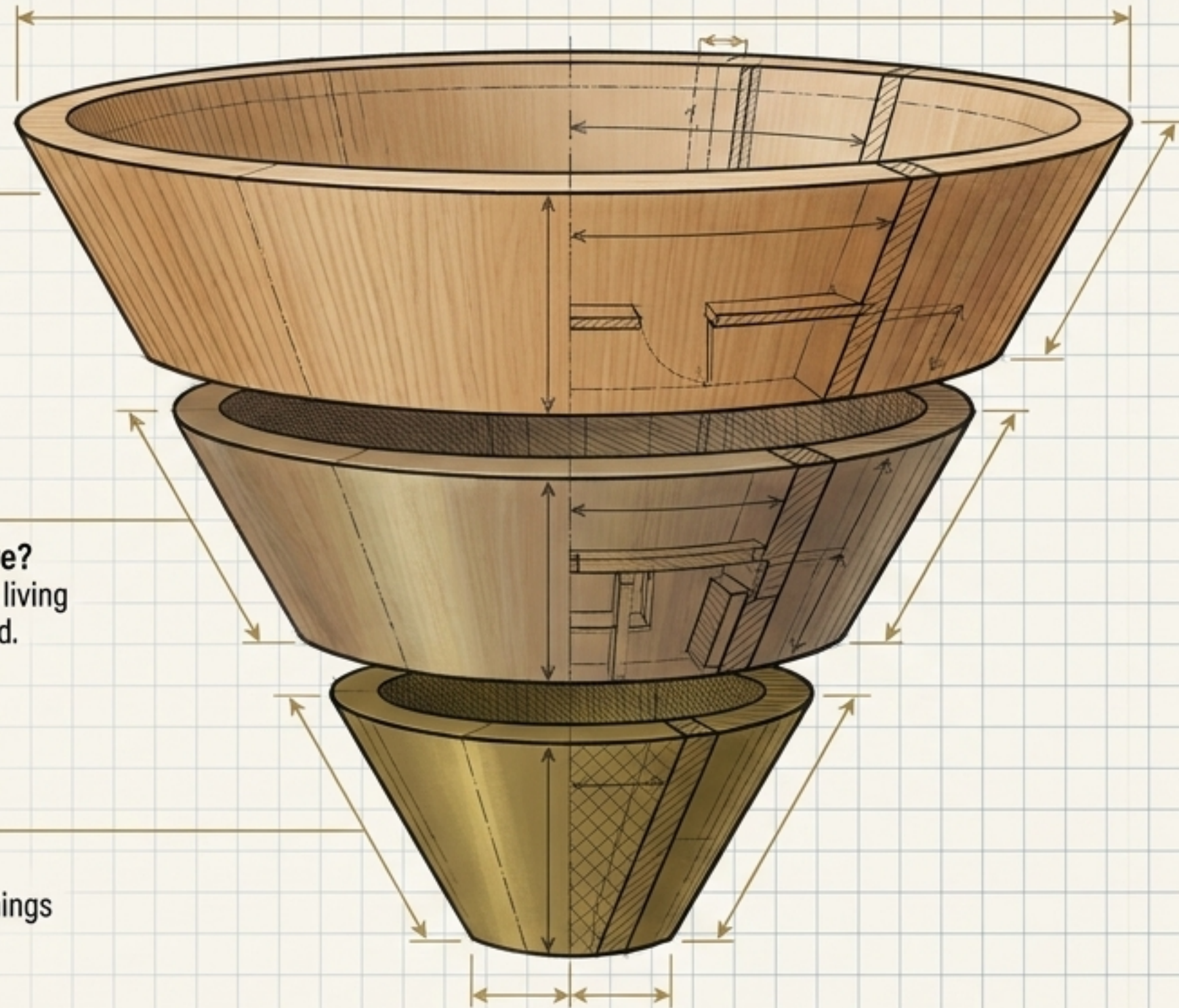
How do we actually use our space from 9 to 5?
Exposes the gap between aspirational aesthetics and daily reality (e.g., "Where does the clutter actually pile up?").

Functional Phase

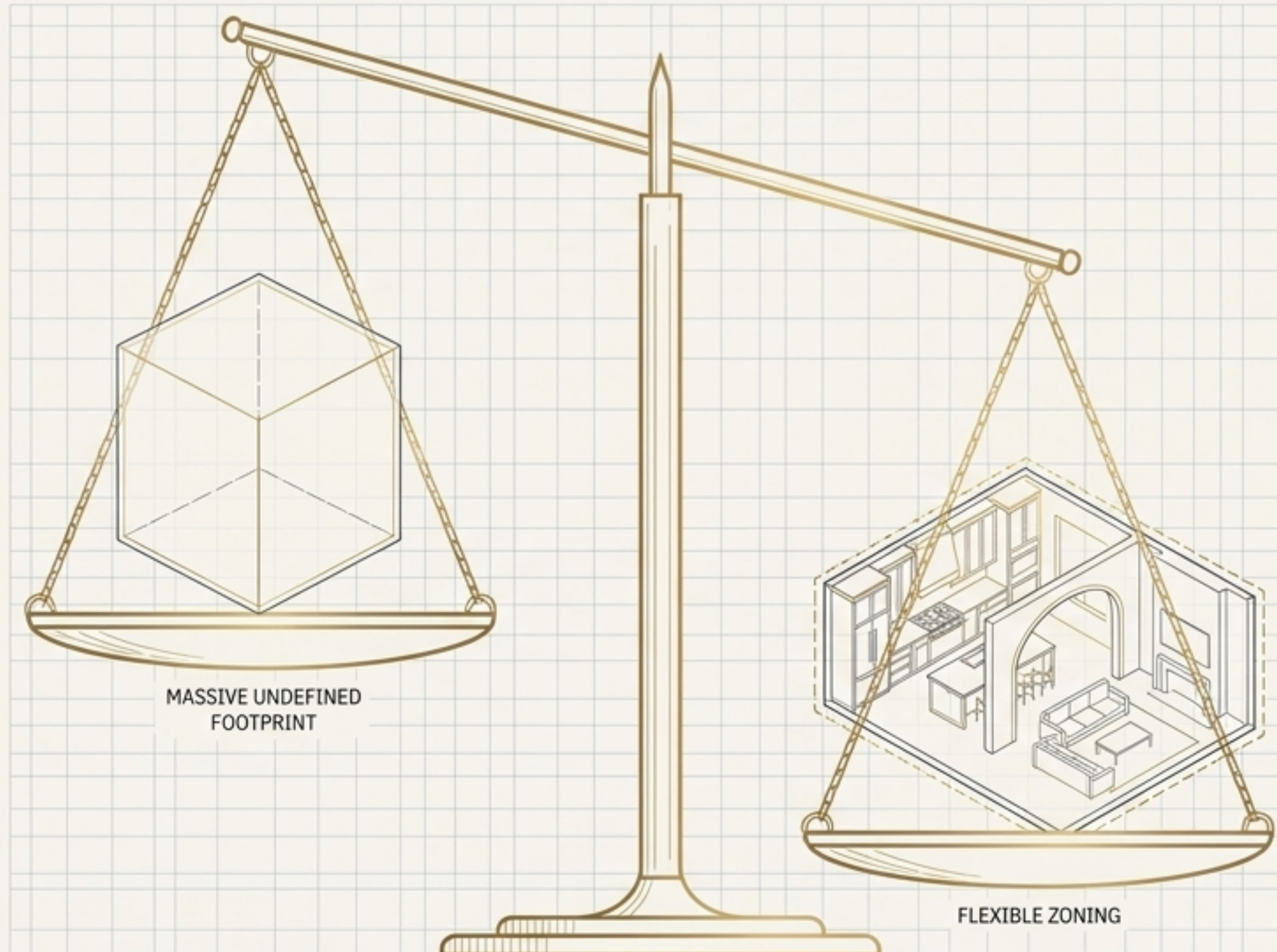
What specific problem is this layout meant to solve?
Clarifies the primary goal (e.g., "We never use the formal living room") and determines if a structural engineer is required.

Tactical Phase

Can we achieve this with partial separation?
Explores alternatives to sledgehammers, like cased openings or built-in shelving, to solve the functional problem.



Real estate markets now prioritize flexible zoning over massive undefined footprints



The Myth

Is an open floor plan bad for resale in 2026? Not necessarily, but the definition of "desirable" has permanently evolved.

The Reality

A massive, completely undefined space is increasingly viewed as a negative by buyers demanding functional work-from-home capability.

The Winning Formula

A flexible layout demonstrating both openness and utility—such as a large kitchen connected to a family room via a wide cased opening—consistently outperforms completely undefined caverns on the market.

The 2026 residential paradigm demands thoughtful design over minimalist aesthetics

“The minimalist decade is over. We are done with cavernous white boxes that echo every sound and offer no sense of intimacy. The new luxury is a home that works for its inhabitants, providing both connection and sanctuary. The 2026 home is not about being open or closed. It is about being thoughtful.”

— Sarah Chen, Renology

This strategic framework relies on 2025 and 2026 national housing data

- National Association of Home Builders (NAHB), “What Home Buyers Really Want,” 2026 Edition.
- The NKBA (National Kitchen & Bath Association), “2026 Design Trends Report.”
- Remodeling Magazine, “2025 Cost vs. Value Report,” National Averages.
- U.S. Census Bureau, “American Housing Survey,” 2025.
- U.S. Bureau of Labor Statistics (BLS), “Occupational Employment and Wage Statistics,” May 2025 National Data.
- Renology Project of the Day Network & Editorial Trade Interviews.